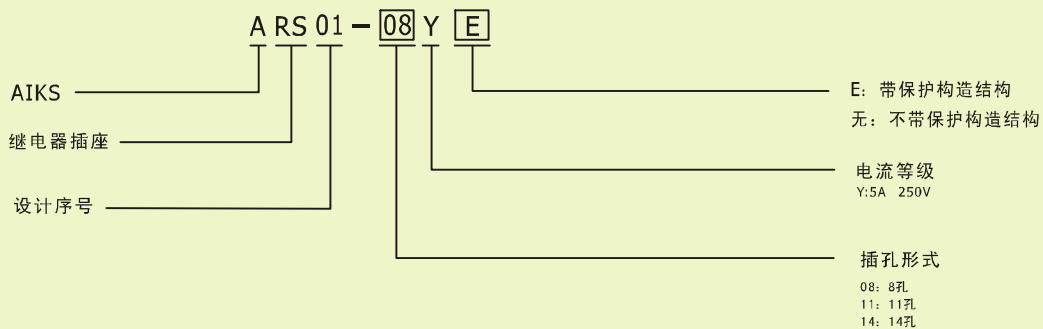


ARS01系列

性能参数

- 环境温度：-40℃~70℃
- 额定电流：10A
- 钢制卡簧型号：ARS-H1
- 插入式模块：无
- 剥露导线长度：7mm
- 适用继电器型号
- 额定电压：250VAC
- 介质耐压min.：2000VAC(输入输出间)
- 标识卡：无
- 螺钉扭矩：0.8Nm
- 最大导线范围：2×1.5mm²

型号注释



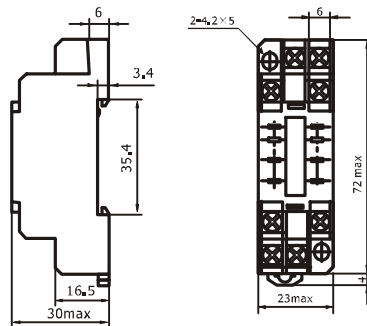
外形图, 接线图, 安装尺寸图

单位: mm

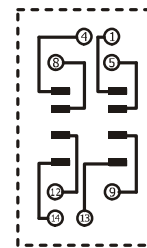
ARS01-08Y



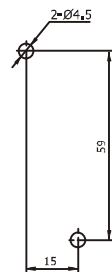
外形图



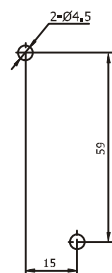
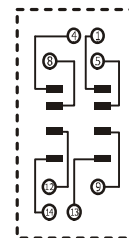
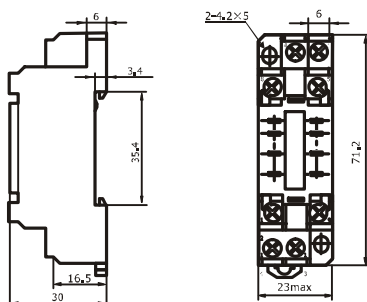
接线图



安装孔尺寸



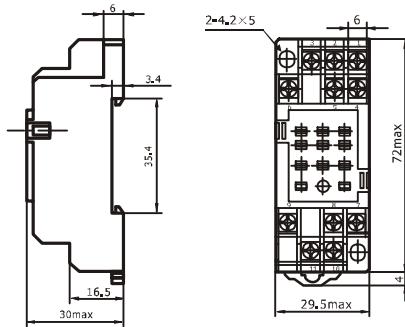
ARS01-08YE



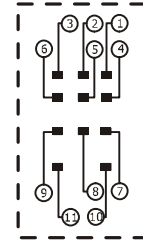
▶ 外形图, 接线图, 安装尺寸图

单位: mm

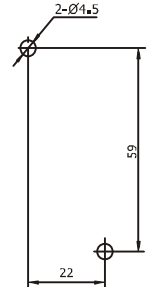
ARS01-11Y



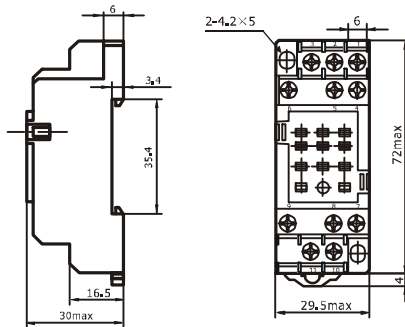
接线图



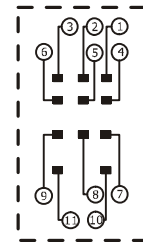
安装孔尺寸



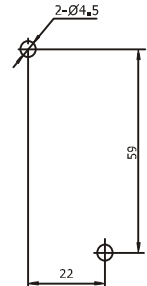
ARS01-11YE



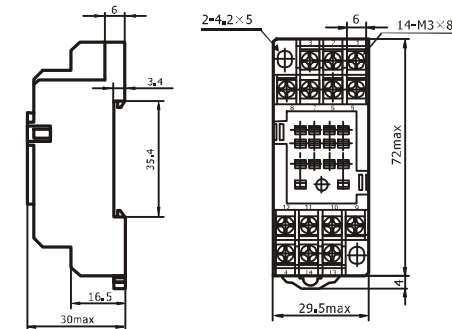
接线图



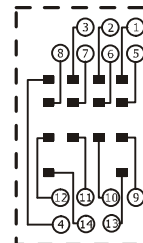
安装孔尺寸



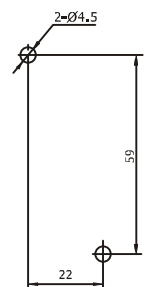
ARS01-14Y



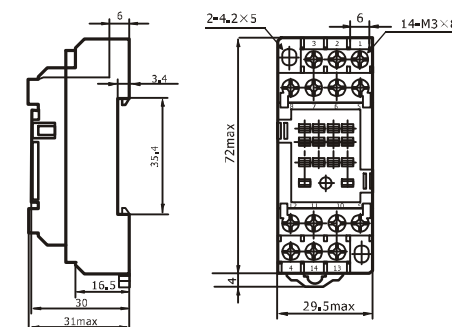
接线图



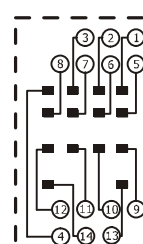
安装孔尺寸



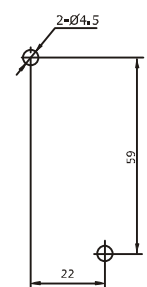
ARS01-14YE



接线图



安装孔尺寸



▶ 配套卡簧尺寸

单位: mm

ARS-H1

