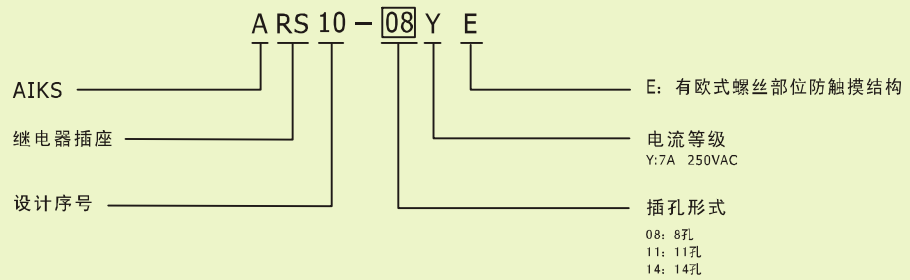


ARS10系列

性能参数

- 环境温度：-40℃~70℃
- 额定电流：7A
- 卡簧：ARS-H10A、ARS-H10B
- 插入式模块：无
- 剥露导线长度：7mm
- 适用继电器型号：ARN系列
- 额定电压：250VAC
- 介质耐压min.：2000VAC(输入输出间)
- 标识卡：有
- 跨接片型号：
- 螺钉扭矩：0.6Nm
- 最大导线范围：1×4/2×2.5mm²

型号注释



外形图, 接线图, 安装尺寸图

单位: mm

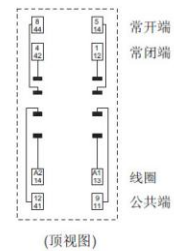
ARS10-08YE



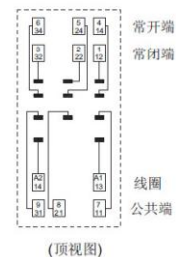
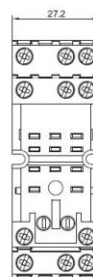
外形图



接线图



ARS10-11YE

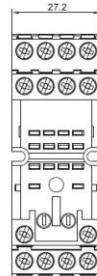


▶ 外形图, 接线图, 安装尺寸图
单位: mm

ARS10-14YE

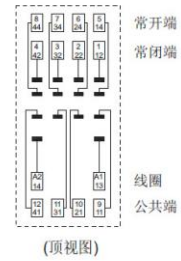


外形图



(顶视图)

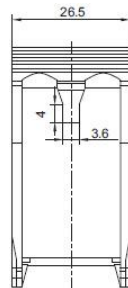
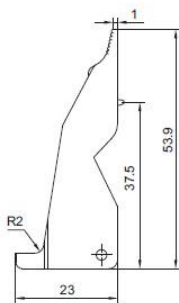
接线图



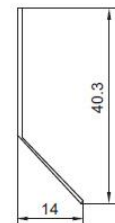
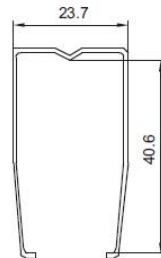
(顶视图)

▶ 配套卡簧尺寸
单位: mm

ARS-H10A (塑料卡簧)



ARS-H10A (钢制卡簧)


▶ 标识卡尺寸
单位: mm
